



## Connectivity Without Compromise for Healthcare

### Ready. Set. OnGo.

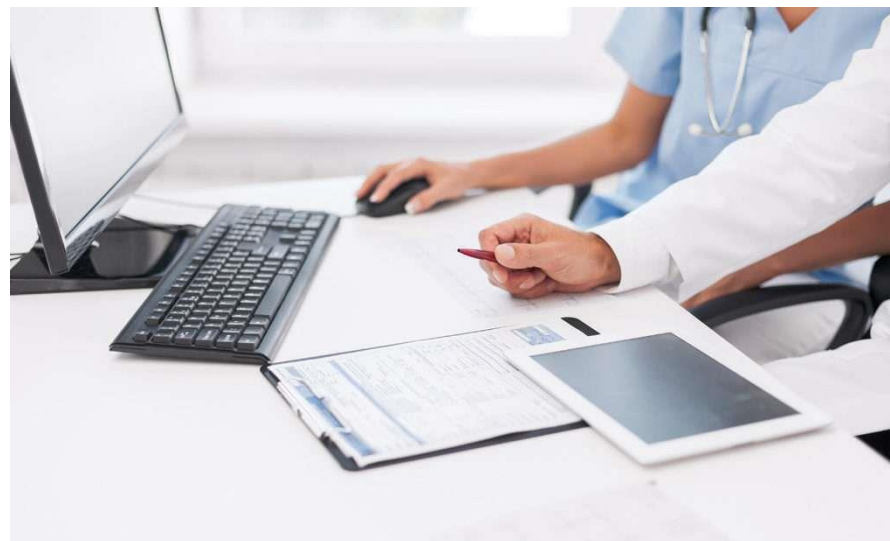
Wireless spectrum is not a valuable resource, it's a vital one. Today, OnGo delivers uncompromised connectivity by giving you access to wireless spectrum that was primarily available only to government agencies and fixed satellite station operators. It puts the power of a private wireless network into your hands to extend new business opportunities for your business – using LTE technology in the 3.5 GHz CBRS Band today, with a roadmap to 5G in the near future.

OnGo presents nearly limitless options for enhanced customizability, effectively allowing you to tailor your network to a specific set of needs.

### OnGo - Connectivity for Healthcare

CBRS makes it possible to take an under-utilized public resource – 150 MHz of low-band spectrum in the 3.5 GHz band – and close the digital divide for more than 24 million Americans who do not have access to fixed terrestrial broadband at the FCC's benchmark speed.

Healthcare facilities face many challenges as the number of connected devices increase, while the imperative to secure patient data stays at an all-time high. Clinics and hospitals experience interference with existing wireless connectivity



systems, such as Wi-Fi, and may experience “dead spots” that impact both staff and caregivers’ ability to access wireless services. This also creates a separate environment for caregivers and visitors to ensure patient safety by pushing non-critical usage to Wi-Fi while maintaining patient data over Private LTE.

#### Explore OnGo for use cases including:

- *Private LTE networks for patient data* – for scenarios requiring ultra-low latency, OnGo can enable delivery of rich medical data sets on-demand (such as MRI and X-ray scans, etc.). Providers can spend less time gaining access

to the information they need to treat and prevent illnesses.

- *Asset management for medical devices*- Staff must monitor and manage access to medical equipment throughout facilities, including ultrasound machines, ventilators, beds or wheelchairs. OnGo can support tracking of smart medical equipment to enable staff to spend more time on patient care.
- *Improving Patient Outcomes* – New ability to easily integrate the latest nurse call technology with OnGo private 4G consolidates all critical messaging, voice and healthcare data to one highly secure dedicated cellular smart device. Ensures greater staff efficiency, situational awareness, reduces errors and improves patient outcomes.
- *Mobile Only Device for Caregivers* – Now caregivers can carry a single device with improved service quality through connectivity to both clinical data and hospital communications.

## Get started on Your Journey to OnGo

To learn about the best solutions to your connectivity challenges, start by outlining your core requirements, including:

- How will the network be used?
- Who will be connecting to the network?
- What devices will be connecting to the network?
- How many users, devices, or IoT nodes will require access?
- In what type of environment will the system be deployed?
- How do you prefer to install, own and operate the network?

To view a **Deployment Guide for OnGo Private LTE Networks**, please visit:

<https://www.cbrsalliance.org/resource/ongo-private-lte-deployment-guide/>

## Realizing the OnGo Vision

To make the OnGo vision a reality, the member companies that make up the CBRS Alliance – including founding companies like Google, Qualcomm, Ruckus Networks, Intel, Federated Wireless and Ericsson Inc. as well as the national's largest mobile carriers - have collaborated to evangelize OnGo technology, use cases and business opportunities. To do this, the CBRS Alliance has developed a set of detailed Baseline Specifications and an accompanying OnGo Certification Program.

To learn more, please visit: [www.cbrsalliance.org](http://www.cbrsalliance.org), and follow us on Twitter and LinkedIn: @OnGoWireless.

